

SPECIFICATIONS:

CONSTRUCTION : PER UL STANDARD 891- SUITABLE FOR USE AS SERVICE ENTRANCE EQUIPMENT.

ENCLOSURE: TOTALLY ENCLOSED, FRONT ACCESSIBLE, CODE GAUGE STEEL. ANSI 61 TEXTURED POWDER COAT FINISH

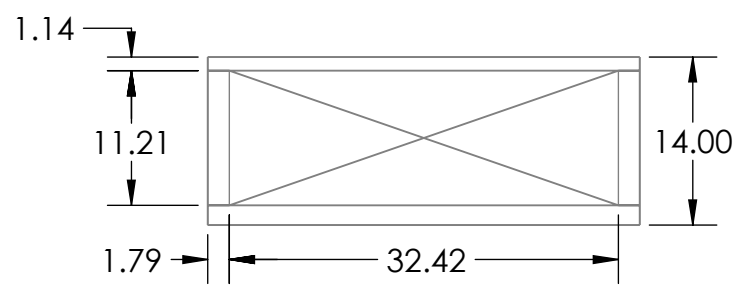
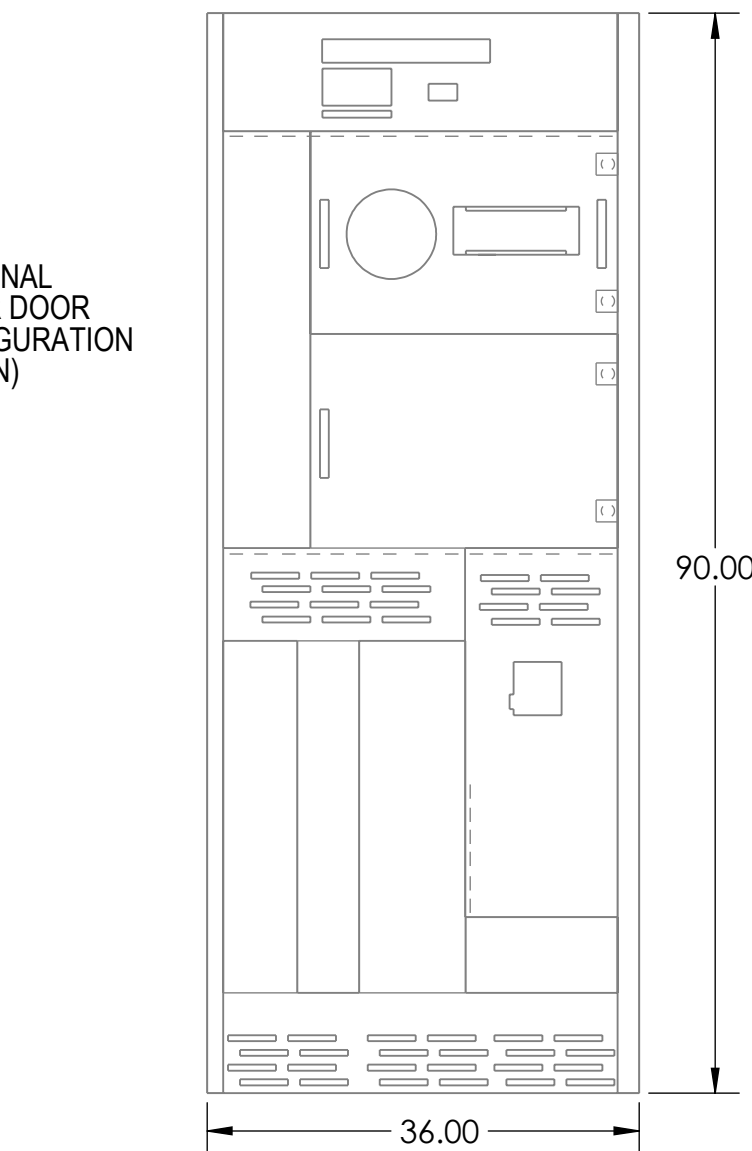
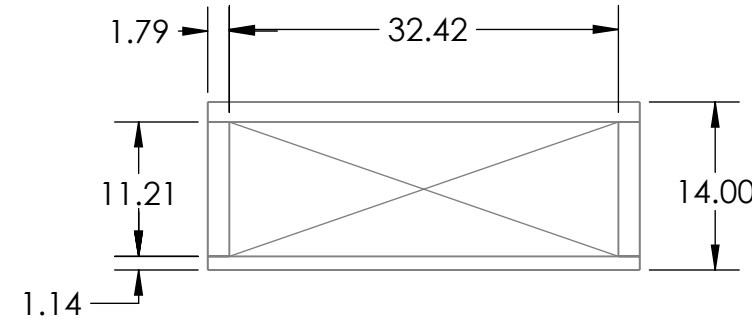
INCOMING CABLE LUGS: ONE TWIN CONDUCTOR 2 AWG - 600 KCMIL (AL OR CU)

DISTRIBUTION PANEL: I-LINE PANEL HAS 27.00/(686) OF MOUNTING SPACE FOR QB, 02-H, OD, QG, OJ, 04, FY, FA, FH, HD, HG, HJ, HL, JD, JG, JJ AND JL CIRCUIT BREAKERS.

METERING: CURRENT TRANSFORMER COMPARTMENT PER EUSERC REQUIREMENTS. OPTIONAL LOADSIDE WIREWAY: 11.50/(292) WIDE PERMITS TOP EXIT OF LOAD CABLES. (NOT AVAILABLE ON TYPE 3R ENCLOSURES.)

BUS MATERIAL: SILVER-PLATED COPPER

THE SHORT-CIRCUIT CURRENT RATING OF THIS SWITCHBOARD SECTION IS EQUAL TO THE LOWEST SHORT-CIRCUIT RATING OF ANY SECTION ELECTRICALLY CONNECTED IN SERIES, OR THE LOWEST MARKED RATING AT THE SUPPLY VOLTAGE OF ANY CIRCUIT BREAKER OR SERIES CONNECTED RATING INSTALLED IN THIS SECTION. THE SECTION'S MAXIMUM SHORT-CIRCUIT CURRENT RATING IS 65,000 RMS SYMMETRICAL AMPERES AT 240V AC.



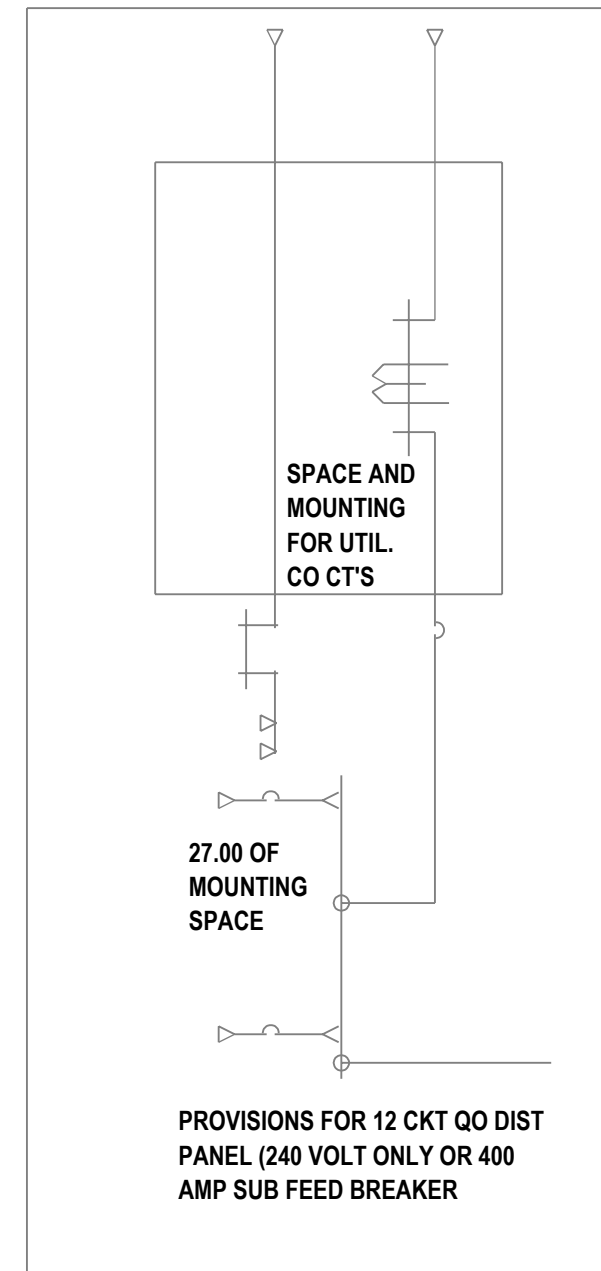
CURRENT	ENCLOSURE	CATALOG NUMBER
400A	NEMA 1	SB124IS
400 A	NEMA 3R	SB124IR*
600A	NEMA 1	SB126IS
600A	NEMA 3R	SB126IR*

* SEE SPEED-D11 FOR NEMA 3R DETAILS

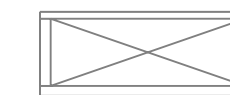
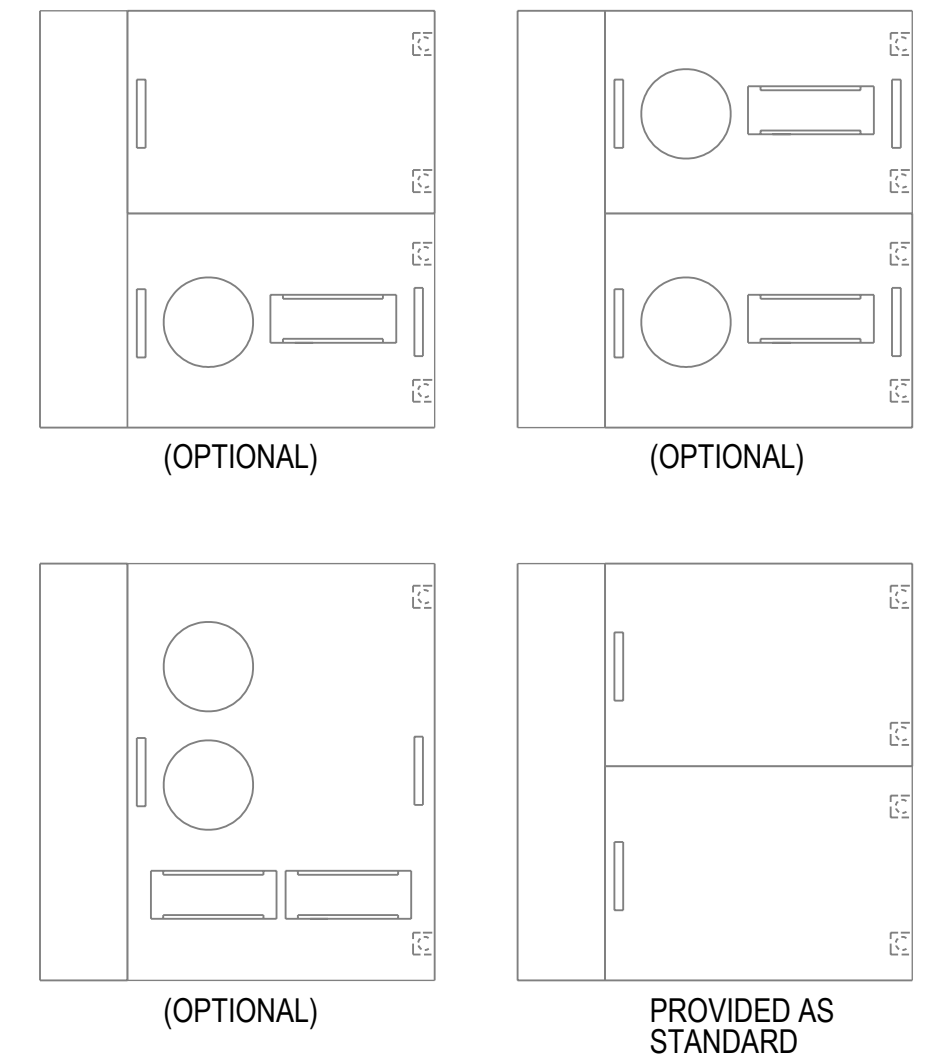
EUSERC REFERENCE
 EUSERC DWG 319 - INSTRUMENT COMPARTMENT
 EUSERC DWG 332 - 15" METER PANEL
 EUSERC DWG 333 - 30" METER DOOR

ADDITIONAL SHORT-CIRCUIT CURRENT RATINGS
 BASED UPON SERIES CONNECTED RATINGS

SYSTEM VOLTAGE, AC	**MAXIMUM SHORT-CIRCUIT CURRENT RATING	SQUARE D MAIN CIRCUIT BREAKERS		SQUARE D BRANCH CIRCUIT BREAKERS			
		CAT PREFIX	MAX AMP	CAT PREFIX	AMPERES	POLES	
120 VOLTS	42 kA	LH	400 A	FY	15-20	1	
		MJ	600A	FH	15-25	2, 3	
240 VOLTS	42 kA	LH	400A	Q2-H	100-225	2	
			400A	Q4	250-400	2	
		MJ	600A	HD	15-150	2, 3	
			600A	JD	175-225	2, 3	
		65 kA	LH	400A	QD	70-225	2
			MJ	600A	QD	70-225	2



METER DOOR CONFIGURATIONS



INDICATES RECOMMENDED CONDUIT AREA

NOTES: 1. UNITS OF MEASURE: INCH 2. STANDARD TOLERANCE UNLESS OTHERWISE SPECIFIED	LINEAR DIMENSION	X.X = ±0.060 X.XX = ±0.030 X.XXX = ±0.020	MATERIAL:	MP MAVERICK POWER	REV	DESCRIPTION
	HOLE DIAMETER	X.XX = ±0.010 X.XXX = ±0.003	FINISH:		ECR #:	THIRD ANGLE
	ANGLE	DIMENSIONED ±1° UNDIMENSIONED 90°±2°	FIRST USED ON:	MASS (LBS): 468	THIS DRAWING IS THE PROPERTY OF MAVERICK POWER AND CONTAINS PROPRIETARY AND CONFIDENTIAL INFORMATION WHICH MUST NOT BE DUPLICATED USED OR DISCLOSED OTHER THAN AS EXPRESSLY AUTHORIZED BY MAVERICK POWER.	DWG/PART NO. SPEED-D02